



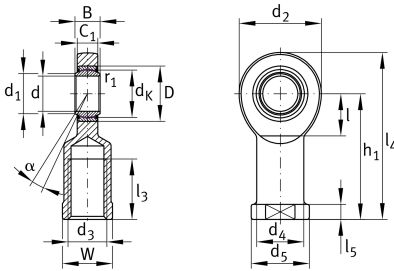
## GIR35-UK-2RS-A

### Rod end

Schaeffler ID:  
0066455930000

Rod end with internal thread, maintenance-free, sliding layer: ELGOGLIDE, DIN ISO 12240-4, dimension series E, type F, inner ring curved surface with hard chromium coating, sealed, right hand thread

### Technical information



### Main Dimensions & Performance Data

d	35 mm	Bore diameter bearing
D	55 mm	Outside diameter bearing
B	25 mm	Width inner ring
$C_r$	210,000 N	Basic dynamic load rating, radial
$C_{0r}$	159,000 N	Basic static load rating, radial
	1.367 kg	Weight

### Dimensions

$d_K$	47 mm	Ball diameter
$d_1$	39.7 mm	Outer flange diameter inner ring
$d_2$	82 mm	Outer eye diameter
$d_3$	M36x3	Thread size
$d_4$	47 mm	Shank diameter
$h_1$	125 mm	Shank Length Internal thread head
$C_1$	21 mm	Width of the rod end
$\alpha$	6 °	Tilt angle
$l_3$	60 mm	Thread length Internal thread
$l_4$	166 mm	Total length internal thread head
$l_5$	15 mm	length rod end shank
$l_7$	42 mm	Distance drilling with/shaft start
$d_5$	58 mm	Shank diameter, large
W	50 mm	Width Across Flat
$G_r$	0 - 0,05 mm	Radial Clearance
$d_{OT}$	0 mm	Bore diameter bearing, upper tolerance
$d_{UT}$	-0.012 mm	Bore diameter bearing, lower tolerance
$B_{OT}$	0 mm	Width inner ring, upper tolerance
$B_{UT}$	-0.12 mm	Width inner ring, lower tolerance

**Mounting dimensions**

---

$r_{1smin}$	0.6 mm	Edge Spacing
-------------	--------	--------------

**Temperature range**

---

$T_{min}$	-30 °C	Operating temperature min.
$T_{max}$	130 °C	Operating temperature max.